



  
**Counteract<sup>®</sup>**

*Balancing the wheels of transportation*

**Product Catalog**

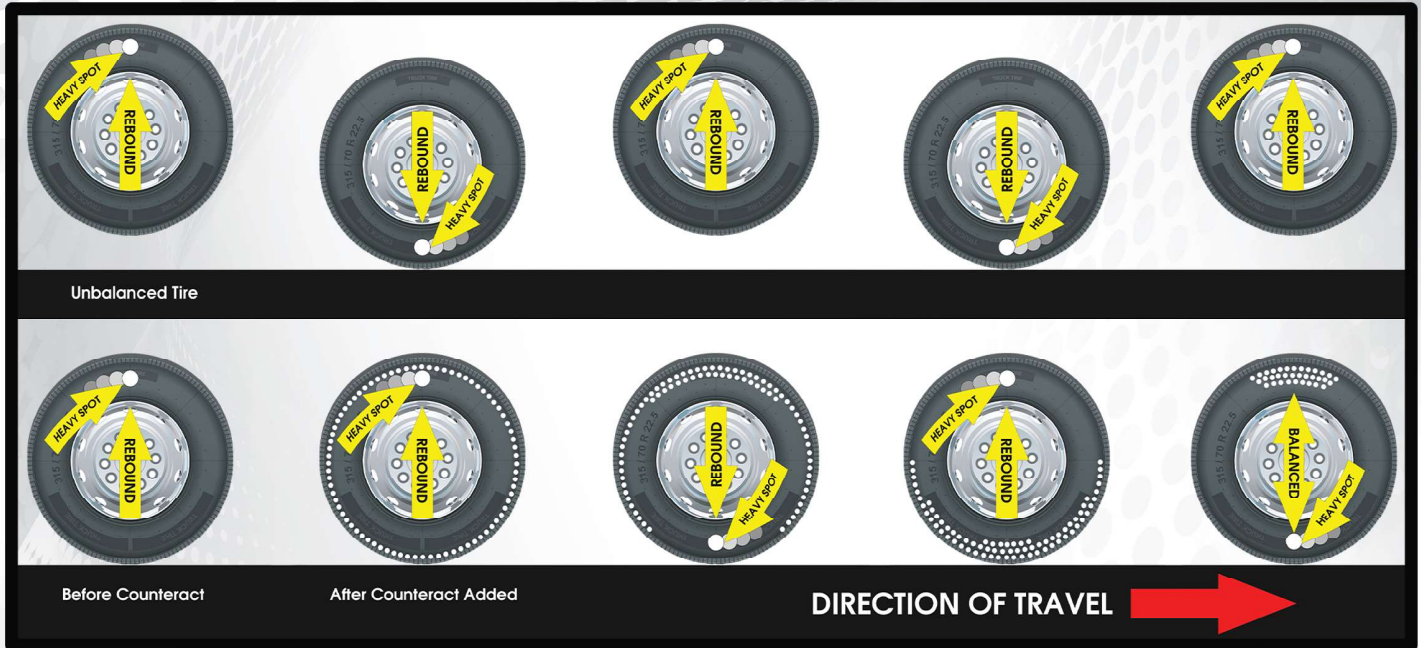


# Table of Contents

How Counteract Works	3
Counteract Balancing Beads	4
Balancing Bucks	5
Counteract DIY Kits	6-7
Counteract Motorcycle DIY Kits	8
Counteract Motorcycle Balancing Beads	9
Counteract Ready Balance Motorcycle Tubes	10
Counteract ATV/UTV DIY Kits and DIY Trailer Kits	11
ECO Balancing Beads	12
ECO XL Balancing Beads	13
Stud Cleaning Tools	14-15
Wheel Maintenance Tools	16
Hub Pro and Hub Pro XL	17
Wheel Maintenance Kits	18-19
Valve Accessories	20
Counteract Accessories	21-22
Counteract/ECO Tire Mounting Paste/Lube	23
Centering Sleeves	24
5th Wheel Grease	25
Six-Way Socket Set	26
Marketing Materials	27
Light/Med/Heavy Duty Application Chart	28-29
All Terrain and Mud Terrain Application Chart	30
Motorcycle Application Chart	31
ATV/UTV Application Chart	32
Vintage and Classic Car Application Chart	33
Trailer Tire Application Chart	34
QR Link to Media and Information	35

# HOW COUNTERACT TIRE BALANCING WORKS

The balancing beads are distributed around the tire as it begins to roll, through centrifugal force. As the centrifugal force increases, the heavy spot pulls up and down on the suspension, making the beads move in the opposite direction of the downward and upward motion, through inertia. The beads continue to migrate until the complete wheel assembly is balanced.



## IMPROVE FUEL ECONOMY

Counteract is the only balancing product in the world proven to increase fuel economy. Counteract has demonstrated savings of at least 2.2% in two separate SAE J1321 and TMC RP-1102 Type II Fuel Tests. Don't believe us? You can download and review the tests yourself at [www.cbbtests.com](http://www.cbbtests.com)



## REDUCE MAINTENANCE COSTS

Heavy vibration for extended periods of time is one of the leading causes of maintenance issues. On average it takes 10-12 minutes to balance a transport truck tire with wheel weights. Using Counteract, it only takes the time needed to mount the tire.



## REDUCE VIBRATION

There is more to balance than just the tire and wheel. Counteract's unique technology will also balance everything rotating on the axle end including the brake drum and hub, while readjusting itself on the go when experiencing new and changing out of balance conditions. Something wheel weights cannot do.



## INCREASE TIRE LIFE

Counteract Balancing Beads reduces rolling resistance of the tire up to 18%. This in turn, reduces tire wear. When a tire and complete wheel assembly is properly balanced, on average Counteract is known to increase tire life by at least 30%.

## Learn how it works



▶ Introduction

## See it in action



▶ Beads in Action

# Counteract Balancing Beads



1oz



2oz



3oz



4oz



5oz



6oz



8oz



10oz



12oz



14oz



16oz



20oz

<sup>1</sup> Number of balance applications per master bag  
<sup>2</sup> Number of master bags per case

Part #	App <sup>1</sup>	Flow Thru Cap	CBB Cap	CBB Core	Case Quantity <sup>2</sup>
1 oz. B	4		✓	✓	40
2 oz. B	4		✓	✓	32
3 oz. B	4		✓	✓	24
4 oz. B	1		✓	✓	92
5 oz. B	1		✓	✓	76
6 oz. B	1		✓	✓	64
8 oz. B	1	✓	✓	✓	52
10 oz. B	1	✓	✓	✓	40
12 oz. B	1	✓	✓	✓	36
14 oz. B	1	✓	✓	✓	32
16 oz. B	1	✓	✓	✓	28
20 oz. B	1	✓	✓	✓	24



# Want to earn **FREE** stuff?



Look out for Counteract Balancing Bucks that are included in every case of Counteract Balancing Beads. You can earn **FREE** Counteract products like:

- FREE** Case of Balancing Beads
- FREE** Commercial Air Tool Kit
- FREE** Stud Cleaning Tool Kit
- FREE** Air Driver
- FREE** Tire Mounting Lube

and more!

When you accumulate enough for what you want, fill out ALL of the information on the back of the coupons and mail them to:

555 Southgate Drive  
Guelph, ON, Canada  
N1G 3W6

For an up to date list of rewards, visit  
[www.counteractbalancing.com/balancingbucks](http://www.counteractbalancing.com/balancingbucks)

\*Please provide sufficient postage and tracking for delivery to Canada. Counteract is not responsible for lost balancing bucks without proof of delivery. Please allow 10 business days from Counteract receiving your redemption for the rewards to be processed.

# DIY Kits

- Packaged in kits for DIY application



**DIYK-3**



**DIYK-4**



**DIYK-5**



**DIYK-6**



**DIYK-8**



**DIYK-10**



**DIYK-12**



**DIYK-14**



**DIYK-16**



**DIYK-20**



**DIYDK-6**



**DIYDK-8**



**DIYSK-10**



**DIYSK-12**



**DIYK-1012**



**DIYK-1214**



\*Number of balance applications per kit

Part #	App*	Injection Bottle	Core Tool	Caps & Cores	Flow-Through Caps	Kits per Case
DIYK-3	4	✓	✓	✓		18
DIYK-4	4	✓	✓	✓		18
DIYK-5	4	✓	✓	✓		18
DIYK-6	4	✓	✓	✓		18
DIYK-8	4	✓	✓	✓	✓	18
DIYK-10	4	✓	✓	✓	✓	12
DIYK-12	4	✓	✓	✓	✓	12
DIYK-14	4	✓	✓	✓	✓	12
DIYK-16	4	✓	✓	✓	✓	4
DIYK-20	4	✓	✓	✓	✓	4
DIYDK-6	6	✓	✓	✓		12
DIYDK-8	6	✓	✓	✓	✓	12
DIYK-1012	10	✓	✓	✓	✓	4
DIYSK-10	2	✓	✓	✓	✓	18
DIYSK-12	2	✓	✓	✓	✓	18
DIYK-1214	10	✓	✓	✓	✓	4



Injection Bottle



Valve Core Tool



Valve Caps



Valve Cores



Flow-Through Caps

## Injection Method Instructions

1. Cut the Counteract bottle spout above the indicated mark. Remove the bottle cap and carefully pour the beads into the injection bottle. Attach clear tube to the bottle cap spout.
2. Rotate the wheel so the valve stem is at the 4 to 6 o'clock position. Deflate the tire by removing the valve core with the tool provided. Place end of tube over the valve stem.
3. Invert the bottle and squeeze repeatedly to allow beads to pump into the tire. A vibrating tool can help encourage the beads through the stem if need be.
4. Use the airline to clear the valve stem then screw the Counteract valve core into the valve stem. Inflate the tire to the manufacturer's recommended pressure and screw the supplied self sealing valve cap on.

# Motorcycle DIY Kits

\*Refer to page 31 for motorcycle application chart



**KIT A**



**KIT B**



**KIT C**



**KIT D**



**KIT E**



**KIT F**



**KIT G**



**KIT H**



**KIT I**



**KIT J**

\*Number of balance applications per kit

Part #	Applications*	Injection Bottle	Core Tool	Cap & Core	Kits per Case
<b>KIT A</b>	2 x 1oz	✓	✓	✓	40
<b>KIT B</b>	1 x 1oz, 1 x 2oz	✓	✓	✓	40
<b>KIT C</b>	1 x 1oz, 1 x 3oz	✓	✓	✓	40
<b>KIT D</b>	2 x 2oz	✓	✓	✓	40
<b>KIT E</b>	1 x 2oz, 1 x 3oz	✓	✓	✓	40
<b>KIT F</b>	1 x 2oz, 2 x 3oz	✓	✓	✓	40
<b>KIT G</b>	2 x 2oz, 1 x 3oz	✓	✓	✓	40
<b>KIT H</b>	4 x 2oz	✓	✓	✓	40
<b>KIT I</b>	2 x 2oz, 2 x 3oz	✓	✓	✓	40
<b>KIT J</b>	4 x 3oz	✓	✓	✓	40



## Motorcycle Dealer Bags



**MK1oz**



**MK2oz**



**MK3oz**



## Motorcycle Service Packs



**MKSP1**



**MKSP2**



**MKSP3**

\*Number of balance applications per Master Pack

Part #	Applications*	Cores	Caps	Case Quantity
<b>MK1oz</b>	4 x 1oz	✓	✓	160
<b>MK2oz</b>	4 x 2oz	✓	✓	128
<b>MK3oz</b>	4 x 3oz	✓	✓	96
<b>MKSP1</b>	20 x 1oz	✓	✓	4
<b>MKSP2</b>	20 x 2oz	✓	✓	4
<b>MKSP3</b>	20 x 3oz	✓	✓	4



Got a tube tire? Check out  
Counteract's Pre-Balanced  
Tubes on page 10



# Ready-Balance Motorcycle Tubes



Rim Diameter	MFG Part NO.	Metric Size	Tire Size Fitment	Valve
10"	MKT-16	2.50/2.75-10	2.50-10, 2.75-10	TR87
	MKT-15	3.00/3.50-10	3.00-10, 3.25-10, 3.50-10, 80/90-10	TR87
12"	MKT-14	2.50/2.75-12	2.50-12, 2.75-12, 80/100-12, 100/80-12	TR6
	MKT-13	3.00/3.50-12	3.00-12, 3.25-12, 80/100-12, 100/80-12	TR6
15"	MKT-12	170/80-15	170/80-15	PV-78 (90 Degree)
16"	MKT-01	5.00/5.10-16	5.00-16, 5.10-16, 130/90-16, 140/80-16, 140/90-16, 150/80-16 MT90-16 MU90-16, MV85-16	TR6
	MKT-02	5.00/5.10-16 (90)	5.00-16, 5.10-16, 130/90-16, 140/80-16, 140/90-16, 150/80-16, MT90-16, MU90-16, MV85-16	TR87 (90 Degree)
	MKT-17	5.00/5.10-16 Side Valve	5.00-16, 5.10-16, 130/90-16, 140/80-16, 140/90-16, 150/80-16, MT90-16, MU90-16, MV85-16	TR6 Side Valve
17"	MKT-11	2.50/3.00-17	2.50-17, 2.75-17, 3.00-17, 3.10-17, 70/100-17, 80/90-17, 100/80-17	TR6
	MKT-04	4.00/4.50-17	4.00-17, 4.25-17, 4.50-17, 4.60-17, 110/90-17, 110/100-17, 120/80-17, 120/90-17, 130/80-17, 130/70-17	TR6
	MKT-03	6.00/6.50-17	150/160/170-17, 150/70-17, 170/60-17	TR6
18"	MKT-05	4.00/4.60-18	4.00-18, 4.25-18, 4.50-18, 4.60-18, 4.70-18, 110/90-18, 110/100-18, 120/80-18, 120/90-18, 130/70-18, 130/80-18, MP85-18, MR90-18	TR6
	MKT-06	5.00/5.10-18	5.00-18, 5.10-18, MT90-18, 120/100-18, 130/90-18, 140/80-18, 140/90-18, 140/70-18	TR6
	MKT-10	5.00/5.10-18 RIM LOCK	5.00-18, 5.10-18, MT90-18, 120/100-18, 130/90-18, 140/80-18, 140/90-18, 140/70-18	TR6
19"	MKT-07	3.50/4.00-19	3.50-19, 4.00-19, 4.10-19, 4.25-19, 4.60-19, 100/90-19, 110/80-19, 110/90-19, 120/80-19, MM90-19, MN90-19	TR6
21"	MKT-08	2.75/3.00-21	2.75-21, 3.00-21, 80/90-21, 80/100-21, 90/80-21, 90/90-21, 100/80-21, MJ90-21, MH90-21	TR6
23"	MKT-09	2.75/3.00-23	2.75-23, 3.00-23, 80/90-23, 80/100-23, 90/80-23, 90/90-23, 100/80-23, MJ90-23, MH90-23	TR6



The first all in one tire & complete wheel assembly balancing inner tube for motorcycles. Counteract's inner tubes come pre-loaded with Counteract Balancing Beads!

No wheel weights, no hassle, just ride.





# ATV/UTV DIY Kits

Scan to learn more;  
View application chart  
Watch installation video



ATV/UTV Kits



Kit K



Kit L



Kit M



Kit N

\*Number of balance applications per kit

Part #	App*	Injection Bottle	Core Tool	Caps & Cores	Kits per Case
Kit K	4 x 4oz	✓	✓	✓	14
Kit L	4 x 6oz	✓	✓	✓	14
Kit M	4 x 8oz	✓	✓	✓	14
Kit N	4 x 10oz	✓	✓	✓	14

# Trailer DIY Kits



Injection Bottle



Core Tool



Valve Cap



Valve Core



Trailer DIY Kits

Part #	App*	Injection Bottle	Core Tool	Caps & Cores	Kits per Case
DIYTK3-2PK	2 x 3oz	✓	✓	✓	14
DIYTK3-4PK	4 x 3oz	✓	✓	✓	14
DIYTK4-2PK	2 x 4oz	✓	✓	✓	14
DIYTK4-4PK	4 x 4oz	✓	✓	✓	14
DIYTK6-2PK	2 x 6oz	✓	✓	✓	14
DIYTK6-4PK	4 x 6oz	✓	✓	✓	14
DIYTK8-2PK	2 x 8oz	✓	✓	✓	14
DIYTK8-4PK	4 x 8oz	✓	✓	✓	14

# ECO Balancing Beads

*An economical glass balancing bead from the makers of Counteract Balancing Beads.*

*Improves Fuel Economy  
Increases Tire Life  
Reduces Vehicle Vibrations  
Lifetime Tire Balance*

*Balances Complete Rotating Axle End Assembly  
TPMS Compatible  
Manufactured with Highest Quality & Reliable Materials*



\*Number of balance applications per master bag

Part #	App*	Case	Flow Thru Cap	ECO Cap	ECO Core
03-EB	4	96		✓	✓
04-EB	1	92		✓	✓
06-EB	1	64		✓	✓
08-EB	1	52	✓	✓	✓
10-EB	1	40	✓	✓	✓
12-EB	1	36	✓	✓	✓
14-EB	1	32	✓	✓	✓
16-EB	1	28	✓	✓	✓
18-EBB	Bucket of ECO Beads 18 lbs with a 2oz scoop		✗	✗	✗

\*Can be injected through valve stem\*

Check out the Injection Pump for Counteract and ECO Balancing Beads on page 22





# ECO XL Balancing Beads

## EXTRA LARGE BEADS FOR EXTREME CONDITIONS

Improves Fuel Economy  
Increases Tire Life  
Reduces Vehicle Vibrations  
Extra Large 2.5mm Tempered Glass  
Lifetime Tire Balance

Balances Complete Rotating Axle End Assembly  
TPMS Compatible  
Manufactured with Highest Quality & Reliable Materials  
No Need for a Special Valve Core



\*Number of balance applications per master bag

Part #	App*	Case	ECO Valve Caps
03-ECOXL	4	96	✓
04-ECOXL	1	92	✓
06-ECOXL	1	64	✓
08-ECOXL	1	52	✓
10-ECOXL	1	40	✓
12-ECOXL	1	36	✓
14-ECOXL	1	32	✓
16-ECOXL	1	28	✓
20-ECOXL	1	24	✓
18-EBBXL	Bucket of loose ECO XL Beads 18 lbs with 2oz scoop		✗

\*Can NOT be injected through valve stem\*

# Stud Cleaning Tools and Brushes



## SBCT13

13mm (1/2")  
Includes SBR13, 1/2" Drive,  
allen key, drive adapter



## SBR12

12mm (7/16")  
Compatible with SBCT13



## SBR13

13mm (1/2")  
Compatible with SBCT13



## SBR14

14mm (9/16")  
Compatible with SBCT13



## SBR16

16mm (5/8")  
Compatible with SBCT13



## HBR13

Hub Cleaning Disc for 13mm stud  
Compatible with SBCT13



## SBCT22

22mm (7/8")  
Includes SBR22, 1/2" Drive,  
allen key, drive adapter



## SBR18

18mm (3/4")  
Compatible with SBCT22



## SBR20

20mm (13/16")  
Compatible with SBCT22



## SBR22

22mm (7/8")  
Compatible with SBCT22



## HBR22

Hub Cleaning Disc for 22mm stud  
Compatible with SBCT22



## SBCT-R22

Removal Tool for clip-in  
SBR22-C, HBR22



## SBR22-C

22mm (7/8") - Clip-in  
Compatible with SBCT22, SBCT22-S



## SBCT22-S

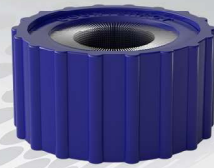
22mm (7/8") - Short handle  
Includes SBR22-C, 1/2" Drive,  
allen key, drive adapter





### **SBCT28**

28mm (1 1/8")  
Includes SBR28, 1/2" Drive,  
allen key, drive adapter



### **SBR28**

28mm (1 1/8")  
Compatible with SBCT28



### **SBR28-HD**

28mm (1 1/8")  
Compatible with SBCT28-HD



### **SBR30-HD**

30mm  
Compatible with SBCT28-HD



### **SBR31-HD**

31mm (1 1/4")  
Compatible with SBCT28-HD



### **SBCT28HD**

28mm (1 1/8") Heavy Duty  
Includes SBR28-HD, 1/2" Drive,  
allen key, drive adapter



### **SBR32-HD**

32mm  
Compatible with SBCT28-HD



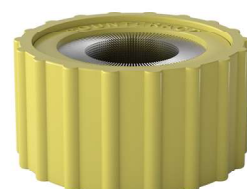
### **SBR33-HD**

33mm  
Compatible with SBCT28-HD



### **SBR34-HD**

34mm  
Compatible with SBCT28-HD



### **SBR39.6-HD**

39.6mm (1 1/2")  
Compatible with SBCT28-HD

# Wheel Maintenance Tools



**CBB-LSAD**



**CNT-107WB**



**CNT-22WB**



**CNT-22**



**CNT-28WB**



**CNT-33WB**

Part #	Description
<b>CBB-LSAD</b>	<b>Low Speed Air Driver.</b> 52ft-lb tq, 1800 RPM, Non-Impact, Fwd/Rev Control
<b>CNT-22</b>	<b>Nut Track</b> that holds 22mm Commercial Wheel Nuts for thread cleaning. Mountable to service station, truck, or bench. Includes 2 x CNT-22WB
<b>CNT-107WB</b>	<b>Wire Brush</b> for cleaning valve stem mounting holes. 10.7mm
<b>CNT-22WB</b>	<b>Wire Brush</b> for cleaning nut threads and mounting holes. 22mm
<b>CNT-28WB</b>	<b>Wire Brush</b> for cleaning nut threads and mounting holes. 28mm
<b>CNT-33WB</b>	<b>Wire Brush</b> for cleaning nut threads and mounting holes. 33mm

*Need multiple products?  
Check out our variety of Wheel Maintenance Kits*





## Hub Pro



### HBCT16

Hub Pro Automotive Tool (1)  
Automotive Cleaning Pad (1)



### HBCTK-22

Hub Pro Commercial Tool (1)  
Commercial Cleaning Pad (5)



### HBCR16

Automotive Cleaning Pads (6)



### HBCR22

Commercial Cleaning Pads (6)



Hub Pro



Before

After

- Fits 1/2" Impact Wrenches.
- Abrasive Cleaning Pads.
- Thread In Replaceable Pads.
- Durable Design.

# Wheel Maintenance Kits



**STK-WMK Commercial Kit**



**STK-2228 Commercial Kit**



**STK-13AD Automotive Kit**



**STK-13 Automotive Kit**



**STK-2228AD Commercial Kit**



**SBCK-AD**



**STK-1322**



Kit Part #	Kit Includes	
<b>STK-WMK</b>	SBCT22-S Stud Tool CBB-LSAD Low Speed Air Driver CNT-22 Wheel Nut Cleaning Track SBR22-C (x3) HBR22 Hub Cleaning Disc SBCT-R22 Safety Glasses	1/2" Drive Adapter CNT-10.7WB Wire Brush (x2) CNT-22WB Wire Brush (x2) CNT-28WB Wire Brush CNT-33WB Wire Brush Allen Key
<b>STK-2228</b>	SBCT22-S Stud Tool SBCT28 Stud Tool SBR18, SBR20, SBR28 (x2) SBR22-C (x2) HBR22 Hub Cleaning Disc SBCT-R22 Safety Glasses	1/2" Drive Adapter (x2) CNT-107WB Wire Brush CNT-22WB Wire Brush CNT-28WB Wire Brush CNT-33WB Wire Brush Allen Key (x2)
<b>STK-2228AD</b>	SBCT22-S Stud Tool SBCT28 Stud Tool CBB-LSAD Low Speed Air Driver SBR18 SBR20 SBR22-C (x2) SBR28 (x2) HBR22 Hub Cleaning Disc	SBCT-R22 Safety Glasses 1/2" Drive Adapter (x2) CNT-107WB Wire Brush CNT-22WB Wire Brush CNT-28WB Wire Brush CNT-33WB Wire Brush Allen Key (x2)
<b>STK-13AD</b>	SBCT13 Stud Tool CBB-LSAD Low Speed Air Driver SBR12 SBR13 (x2) SBR14	SBR16 HBR13 Hub Cleaning Disc Safety Glasses 1/2" Drive Adapter Allen Key
<b>STK-13</b>	SBCT13 Stud Tool SBR12 SBR13 (x2) SBR14 SBR16	HBR13 Hub Cleaning Disc Safety Glasses 1/2" Drive Adapter Allen Key
<b>SBCK-AD</b>	SBCT22 Stud Tool CBB-LSAD Low Speed Air Driver SBR22 (x3)	Safety Glasses 1/2" Drive Adapter Allen Key
<b>STK-1322</b>	SBCT13 Stud Tool SBCT22 Stud Tool SBR13 (x2), SBR12, SBR14, SBR16 SBR22 (x2), SBR18, SBR20	Safety Glasses 1/2" Drive Adapter (x2) Allen Key (x2)

## Valve Accessories



**VCB-FT**



**VCP-MK**



**VCC**  
**VCP**



**VCR-MK**



**VCR2in1**



**VCCB-R**  
**VCP-R**



**VCCB-G**  
**VCP-G**



**VCCB-BK**  
**VCP-BK**



**VCCB-B**  
**VCP-B**

Part #	Product Description	Pack Quantity
<b>VCB-FT</b>	Counteract Flowthrough Cap	100
<b>VCP-MK</b>	Counteract Motorcycle Logo Cap	100
<b>VCC</b>	Counteract Logo Cap - Copper	100
<b>VCP</b>	Counteract Logo Cap - Chrome Plated Plastic	100
<b>VCR-MK</b>	Motorcycle Valve Cap/Valve Core Remover Combo	100
<b>VCR2in1</b>	2 in 1 Valve Core Remover/Tire Valve Bleeder	100
<b>VCCB-R</b>	Counteract Red Cap - Copper	100
<b>VCP-R</b>	Counteract Red Cap - Chrome Plated Plastic	100
<b>VCCB-G</b>	Counteract Green Cap - Copper	100
<b>VCP-G</b>	Counteract Green Cap - Chrome Plated Plastic	100
<b>VCCB-BK</b>	Counteract Black Cap - Copper	100
<b>VCP-BK</b>	Counteract Black Cap - Chrome Plated Plastic	100
<b>VCCB-B</b>	Counteract Blue Cap - Copper	100
<b>VCP-B</b>	Counteract Blue Cap - Chrome Plated Plastic	100



## Accessories



**VCRT**



**VCR**



**VCV**



**CBB-DPG**



**WWR**



**TPG22**



**VP**



**CBB-MKPG**



**MK-RK**



Part #	Product Description	Case Quantity
<b>VCRT</b>	Torquing Valve Core Tool	10
<b>VCR</b>	Valve Core Tool/Flat Head Combo	10
<b>VCV</b>	Counteract Vortex Valve Core	100
<b>CBB-DPG</b>	Digital Tire Pressure Gauge	N/A
<b>WWR</b>	Stick-on Wheel Weight Remover	5
<b>TPG22</b>	22mm Stud Thread Pitch Gauge	N/A
<b>VP</b>	Valve Stem Puller with Rubber Boot	N/A
<b>CBB-MKPG</b>	Motorcycle 90 deg. Tire Pressure Gauge	300
<b>MK-RK</b>	Motorcycle Tire Emergency Repair Kit	N/A

## Accessories



**T13C-TPMS**



**T14C**



**T13C**



**SAWW-12R**



**SAWW-B12R**



**CBB-IP**



**APBV**



**SG-CBB**



**CBBP-G**

Part #	Product Description	Min. Quantity
<b>T13C-TPMS</b>	TPMS snap-in tire valve. For rim holes 11.5 (0.453 diameter), 2.25" tall. EPDM rubber. 100 pc. per bag	1
<b>T14C</b>	TR414 snap-in tire valve. For rim holes 11.5 (0.453 diameter), 1.50" tall. EPDM rubber. 100pc. per bag	1
<b>T13C</b>	TR413 snap-in tire valve. For rim holes 11.5 (0.453 diameter), 1.25" tall. EPDM rubber. 100pc. per bag	1
<b>SAWW-12R</b>	Reel of 1/4oz (0.25oz) adhesive wheel weights. Comes with a total of 176oz or 704 individual weights. Steel and Zinc.	1
<b>SAWW-B12R</b>	Reel of 1/4oz (0.25oz) adhesive wheel weights. Comes with a total of 176oz or 704 individual weights. Steel and Zinc. Black Powder Coat	1
<b>CBB-IP</b>	Injection Pump for Counteract Balancing Beads. Inject beads through valve stem. Hooks directly onto air line.	1
<b>APBV</b>	Pneumatic bead vacuum. Hooks directly onto air line. Replacement bag part #: APBV-B	1
<b>CBBP-G</b>	Anti-cut, anti-impact mechanic gloves. Reinforced grip, spandex back, neoprene wrist, cut-5. Sold in pairs. Available in M, L, XL	1
<b>SG-CBB</b>	Safety Glasses	20



# Tire Lube and Mounting Paste



**CBB-EP8**



**CBB-EP8 KIT**



**CBB-EP2**



**ECO-EP8**



**ECO-EP8 KIT**



**CBB-LUBE8B  
CBB-LUBE25B  
CBB-LUBE40B**



**CBB-EPB**



**ECO-EPB**

Part #	Product Description	Case Quantity
<b>CBB-EP8</b>	Eco-friendly CBB Euro-paste tire mounting compound - 7.7lbs	4
<b>CBB-EP8 KIT ECO-EP8 KIT</b>	2 Euro-paste buckets, 1 Euro-paste brush	N/A
<b>CBB-EP2</b>	CBB Euro-paste motorcycle tire mounting compound - 2.2lbs	16
<b>ECO-EP8</b>	Eco-friendly ECO Euro-paste tire mounting compound - 7.7lbs	4
<b>CBB-EPB ECO-EPB</b>	Tire lubricant compound brush	20
<b>CBB-LUBE8B</b>	Premium tire mounting lube with rust inhibitors - 8lbs	4
<b>CBB-LUBE25B</b>	Premium tire mounting lube with rust inhibitors - 25lbs	N/A
<b>CBB-LUBE40B</b>	Premium tire mounting lube with rust inhibitors - 40lbs	N/A

# Wheel Centering Sleeves



**WCS-B**



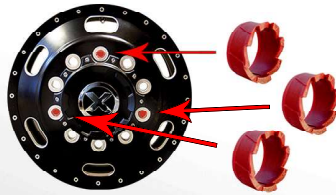
**WCS-C**



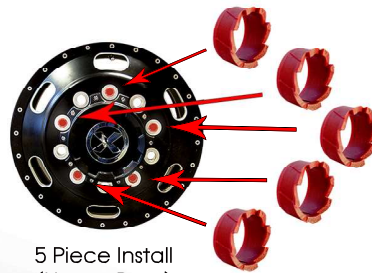
**WCS-D**



**WCS-IT**



3 Piece Install



5 Piece Install  
(Heavy Duty)



20mm now available!  
See chart below

Works in conjunction with your OEM style two-piece flange nuts. Designed to take-up the gap between the 22mm stud and 26mm wheel opening, re-aligning the wheel to the TRUE CENTER of the hub bearing. Increases fuel mileage and tire life, while reducing tire vibration and maintenance costs.



Part #	Product Description	Min. Quantity
<b>WCS-B</b>	6 Piece Centering Sleeve Retail Pack - 22mm	10
<b>WCS-C</b>	100 Piece Centering Sleeve Bucket - 22mm	1
<b>WCS-D</b>	1,000 Piece Centering Sleeve Bucket - 22mm	1
<b>WCS-B20</b>	6 Piece Centering Sleeve Retail Pack - 20mm	10
<b>WCS-C20</b>	100 Piece Centering Sleeve Bucket - 20mm	1
<b>WCS-D20</b>	1,000 Piece Centering Sleeve Bucket - 20mm	1
<b>WCS-IT</b>	Centering Sleeve Installation Tool - 22mm, 20mm	1



# 5th Wheel Grease



Like many safety-related components, a 5th wheel or trailer attachment needs to be in good operating condition to do its job properly and efficiently. The mating surfaces between a hitch-ball and tongue on a traditional trailer or a 5th wheel on a commercial truck must be properly lubricated every use to relieve the resistance and friction between the two metal surfaces.



**CBB-5WG2oz**



**CBB-5WG8oz**

**Step 1** Place 2oz packets on fifth wheel plate.

**Step 2** Back truck up to the trailer.

**Step 3** Once the trailer engages, the packs will burst and lubricate fifth wheel upon motion.

**Step 1** Apply Counteract grease to your trailer hitch ball connection.

**Step 2** Back vehicle up to trailer.

**Step 3** Connect trailer and begin your journey!

Part #	Product Description	MOQ
<b>CBB-5WG2oz</b>	5th Wheel Grease - 2oz Packets - 48 box	48
<b>CBB-5WG8oz</b>	5th Wheel Grease - 8oz Tube - 12 box	12

## Six-Way Socket Set

- Works on corroded, rounded lug heads, and thin walls for specialty aluminum wheels.
- Works on at least 6 different fastener types: Spline, 6-Point, 12-Point, Star, Square, and 50% Rounded Off Heads
- Manufactured using quality Chrome Molybdenum alloy steel for high-torque and durability
- Color-coded protective sleeves for easy identification which helps to prevent damage to custom wheels
- Impact rated



Part #	Product Description	Min. Quantity
<b>CBBS1-33</b>	Deep Impact Socket - 1" Drive - 33mm	1
<b>CBBS1-S5</b>	Deep Impact Socket - 1" Drive - 5pc Set - 17mm, 27mm, 30mm, 33mm, 35mm	1
<b>CBBS1-S10</b>	Deep Impact Socket - 1" Drive - 10pc Set - 13/16", 1-1/16", 1-1/8", 1-1/4", 1-1/2", 17mm, 21mm, 33mm, 35mm, 41mm	1
<b>CBBS12-S3</b>	Deep Thin Wall Impact Socket - 1/2" Drive - 3pc Set - 17mm, 19mm, 21mm	1
<b>CBBS34-S10</b>	Deep Impact Socket - 3/4" Drive - 10pc Set - 13/16", 1-1/16", 1-1/8", 1-1/4", 1-1/2", 17mm, 21mm, 33mm, 35mm, 41mm	1



# Marketing



## Merchandise & Marketing Material



Counteract Brochures	Balancing Beads Brochure - <b>CBBA-CBB</b> Motorcycle Beads Brochure - <b>CBBA-MK</b>	Off Road Beads Brochure - <b>CBBA-OR</b> Centering Sleeves Brochure - <b>CBBA-CS</b>
Tire Brochure Display Holder	<b>CBBP-TD</b>	
Counteract Application Charts	8.5x11 Application Chart - <b>CBBA-AC</b> 17x22 Application Chart - <b>CBBA-ACW</b>	
Shop Marketing Banner	Counteract Truck Banner - <b>CBBP-BT</b> Counteract Motorcycle Banner - <b>CBBP-BM</b>	
Counteract Counter Mat (12x18)	Truck Counter Mat - <b>CBBP-CMT</b> Motorcycle Counter Mat - <b>CBBP-CMM</b>	
Counteract Shaker Bottle	Shaker Bottle - <b>CBBP-SB</b> Shaker Bottle Lid - <b>CBBP-SBL</b>	
Beanies	Black Beanie - <b>CBBP-BB</b> Grey Beanie - <b>CBBP-BG</b>	
Bandanas	Black Motorcycle Bandana - <b>CBBP-BMK</b> Camo Motorcycle Bandana - <b>CBBP-BCAMO</b>	
Hats	Black Hat - <b>CBBP-HB</b> Grey Hat - <b>CBBP-HG</b>	
Counteract Golf Shirt	S - <b>CBBP-GSS</b> L - <b>CBBP-GSL</b> 2XL - <b>CBBP-GS2XL</b> 4XL - <b>CBBP-GS4XL</b> M - <b>CBBP-GSM</b> XL - <b>CBBP-GSXL</b> 3XL - <b>CBBP-GS3XL</b> 5XL - <b>CBBP-GS5XL</b>	
Counteract Motorcycle T-Shirt (Black)	S - <b>CBBP-MSBS</b> L - <b>CBBP-MSBL</b> 2XL - <b>CBBP-MSB2XL</b> M - <b>CBBP-MSBM</b> XL - <b>CBBP-MSBXL</b> 3XL - <b>CBBP-MSB3XL</b>	
Counteract Motorcycle T-Shirt (Grey)	S - <b>CBBP-MSGS</b> L - <b>CBBP-MSGL</b> 2XL - <b>CBBP-MSG2XL</b> 4XL - <b>CBBP-MSG4XL</b> M - <b>CBBP-MSGM</b> XL - <b>CBBP-MSGXL</b> 3XL - <b>CBBP-MSG3XL</b> 5XL - <b>CBBP-MSG5XL</b>	
Hockey Puck Bottle Opener	<b>CBBP-HP</b>	
Red Pill Box Keychain	<b>CBBP-RPKC</b>	

\*All merchandise and marketing material is subject to availability

# APPLICATION CHART Light/Med/Heavy Truck

LIGHT TRUCK				LIGHT TRUCK				TRUCKS				OFF-ROAD					
	TIRE SIZE	1/2 TON	1 TON+		TIRE SIZE	1/2 TON	1 TON+		TIRE SIZE	1/2 TON	1 TON+		TIRE SIZE	1/2 TON	1 TON+		
14"	215/75R14	3	4		195/65R16	3	4		225/80R17.5	8	8		205/75R17.5	6	6		
	205/70R14	3	4		215/65R16	3	4		205/75R17.5	6	6						
	215/70R14	3	4		225/65R16	3	4		215/75R17.5	6	6						
15"	700R15		4		245/65R16	3	4		225/75R17.5	6	6		235/75R17.5	6	6		
	7.50R15		6		255/65R16	3	4		245/75R17.5	6	6						
	8.25R15		6		305/65R16	3	4		195/70R17.5	6	6						
	9R15		8		345/65R16	5	6		215/70R17.5	6	6						
	10R15		8		375/65R16	5	6		235/70R17.5	6	6						
	215/80R15	3	4		215/60R16	3	4		195/60R17.5	6	6						
	195/75R15	3	4		225/60R16	3	4		205/60R17.5	6	6						
	205/75R15	3	4		235/60R16	3	4		225/60R17.5	6	6						
	225/75R15	4	4		285/60R16	3	4		7.50R18	8	8						
	235/75R15	4	4		255/55R16	3	4		255/70R18	3	5						
245/75R15	3	4	315/55R16	3	4	265/70R18	3	5									
255/75R15	3	4	345/55R16	3	5	275/70R18	4	6									
265/75R15	3	4	355/55R16	3	5	275/65R18	4	6									
235/70R15	3	4	375/55R16	4	6	285/65R18	4	6									
245/70R15	3	4	245/50R16	3	4	325/65R18	4	6									
255/70R15	3	4	8R16.5	5	5	355/65R18	4	6									
265/70R15	4	4	9.50R16.5	6	6	395/65R18	6	8									
285/70R15	4	4	10R16.5	6	6	245/60R18	3	4									
315/70R15	4	5	12R16.5	8	8	255/60R18	3	5									
245/65R15	3	4	235/80R17	6	6	265/60R18	3	5									
225/60R15	3	4	235/75R17	6	6	275/60R18	4	6									
325/60R15	4	5	245/75R17	6	6	285/60R18	4	6									
15.5"	185/70R15.5	3	4	255/75R17	6	6	325/60R18	4	6								
16"	6.50R16		4	285/75R17	6	8	375/60R18	6	8								
	7.50R16		4	245/70R17	4	6	395/60R18	6	8								
	8.25R16		6	255/70R17	4	6	255/55R18	3	4								
	11R16		8	265/70R17	6	6	275/55R18	3	4								
	215/85R16	3	4	275/70R17	6	6	285/55R18	3	4								
	225/85R16	3	4	285/70R17	6	6	285/50R18	3	4								
	235/85R16	3	4	305/70R17	6	8	375/50R18	4	6								
	245/85R16	3	4	315/70R17	6	8	255/55R19	3	4								
	255/85R16	4	5	355/70R17	6	8	255/50R19	3	4								
	265/85R16	4	5	225/65R17	3	4	275/45R19	3	4								
275/85R16	4	5	245/65R17	3	4	285/45R19	3	4									
205/80R16	3	4	255/65R17	3	5	325/75R20	6	8									
325/80R16	4	6	265/65R17	4	6	275/65R20	4	6									
175/75R16	3	4	265/65R17	4	6	275/60R20	4	6									
195/75R16	3	4	305/65R17	4	6	325/60R20	4	6									
225/75R16	3	4	375/65R17	6	8	355/60R20	5	6									
235/75R16	3	4	225/60R17	3	4	275/55R20	3	4									
245/75R16	3	4	235/60R17	3	4	285/55R20	3	4									
265/75R16	4	6	255/60R17	4	6	255/50R20	3	4									
285/75R16	4	6	275/60R17	4	6	285/50R20	3	4									
295/75R16	4	6	285/60R17	4	6	305/50R20	4	6									
315/75R16	4	6	225/60R17	3	4	325/50R20	4	6									
215/70R16	3	4	255/55R17	3	4	355/50R20	4	6									
225/70R16	3	4	275/55R17	3	5	325/45R20	4	6									
235/70R16	3	4	345/55R17	3	5	275/40R20	4	6									
245/70R16	3	4	255/50R17	3	4	315/35R20	4	6									
255/70R16	3	4	8R17.5	5	5	325/55R22	5	6									
265/70R16	3	4	8.5R17.5	6	6	335/55R22	5	6									
275/70R16	3	4	9R17.5	6	6	325/50R22	4	6									
305/70R16	3	4	9.5R17.5	8	8	305/45R22	4	6									
315/70R16	4	6	10R17.5	8	8	305/40R22	4	6									
355/70R16	5	6	11R17.5	8	8	285/35R22	3	5									
365/70R16	5	6	225/90R17.5	8	8	325/45R24	4	6									
395/70R16	5	6	205/80R17.5	8	8												
16.5"																	
17"																	
17.5"																	

To achieve maximum results, it is important to use the proper package size for each tire. The amount of Counteract required per tire is based on one ounce per thirteen pounds of tire and rim combination. If you are using our throw in bags, open and discard outside bag only, and throw clear inner bag directly into the tire. It is imperative that none of the contents of the bag end up on the bead/seating area of the tire and rim. In order to reduce the possibility of valve leaks, the use of Counteract's Vortex Valve Core, and Counteract Valve Cap is recommended. The core and cap are included in every bag of Counteract. Counteract is TPMS safe and compatible. Always wear safety glasses when installing CBB. Counteract disclaims any responsibility for air loss or tire damage due to improper installation or air check.



# JUST THROW IT IN!



**TPMS**  
COMPATIBLE

## MED-HEAVY DUTY TRUCK

	TIRE SIZE	Single	Dually		TIRE SIZE	Single	Dually	
19.5"	8R19.5	10	10	24"	385/65R22.5	14	16	
	9R19.5	10	10		425/65R22.5	16	16	
	18R19.5	16	16		445/65R22.5	20		
	280/75R19.5	12	12		285/60R22.5	12	14	
	285/75R19.5	12	12		295/60R22.5	12	14	
	225/70R19.5	10	10		305/60R22.5	12	14	
	245/70R19.5	10	10		315/60R22.5	12	14	
	265/70R19.5	12	12		385/55R22.5	12		
	275/70R19.5	12	12		455/55R22.5	16		
	285/70R19.5	12	12		275/50R22.5	10	12	
	305/70R19.5	14	14		445/50R22.5	20		
	385/65R19.5	14	14		24.5"	11.00R24	14	
	445/65R19.5	16	16			12.00R24	14	
	20"	7.50R20	8			10	14.00R24	16
8.25R20		8	10	445/70R24		16		
9.00R20		10	12	495/70R24	16			
10.00R20		10	12	24.5"	11R24.5	12	14	
11.00R20		12	14		12R24.5	16	16	
12.00R20		12	14		285/75R24.5	12	14	
12.5R20		12	14		305/75R24.5	12	14	
13/80R20		12	14		315/75R24.5	12	14	
14/80R20		12	14		275/80R24.5	12	14	
14.00R20		16	16	295/80R24.5	12	14		
365/80R20	16	16	20.5"	525/65R20.5	20			
395/80R20	16	16		615/65R20.5	20			
20.5"	525/65R20.5	20			22"	10.00R22	12	
	615/65R20.5	20				11.00R22	12	
22"	10.00R22	12			22.5"	9R22.5	10	12
	11.00R22	12				10R22.5	10	12
22.5"	9R22.5	10		12		11R22.5	12	14
	10R22.5	10		12		12R22.5	12	14
	11R22.5	12		14		13R22.5	12	
	12R22.5	12		14		15R22.5	16	
	13R22.5	12		16R22.5		16		
	14R22.5	12		16.5R22.5		16		
	15R22.5	16		18R22.5		20		
	16R22.5	16		235/80R22.5		8	10	
	16.5R22.5	16		255/80R22.5		10	12	
	18R22.5	20		275/80R22.5		12	14	
	235/80R22.5	8	10	295/80R22.5		14	16	
	255/80R22.5	10	12	315/80R22.5		16		
	275/80R22.5	12	14	365/80R22.5		16		
	295/80R22.5	14	16	245/75R22.5		10	12	
	315/80R22.5	16		265/75R22.5	12	14		
	365/80R22.5	16		285/75R22.5	12	14		
245/75R22.5	10	12	295/75R22.5	12	14			
265/75R22.5	12	14	315/75R22.5	14	16			
285/75R22.5	12	14	345/75R22.5	14	16			
295/75R22.5	12	14	350/75R22.5	14	16			
315/75R22.5	14	16	235/70R22.5	8	10			
345/75R22.5	14	16	255/70R22.5	10	12			
350/75R22.5	14	16	11/70R22.5	10	12			
235/70R22.5	8	10	265/70R22.5	10	12			
255/70R22.5	10	12	275/70R22.5	10	12			
11/70R22.5	10	12	305/70R22.5	10	12			
265/70R22.5	10	12	315/70R22.5	10	12			
275/70R22.5	10	12	365/70R22.5	14	16			
305/70R22.5	10	12	365/65R22.5	14	16			
315/70R22.5	10	12						
365/70R22.5	14	16						
365/65R22.5	14	16						

- 3** 3oz      **10** 10oz
- 4** 4oz      **12** 12oz
- 5** 5oz      **14** 14oz
- 6** 6oz      **16** 16oz
- 8** 8oz      **20** 20oz

**How much Counteract for your tire?**

Visit [howmuchcounteract.com](http://howmuchcounteract.com) or download our app



All recommendations are for stock applications. If any vehicle modifications have been performed please consult with Counteract before proceeding with use of the product. Counteract is not responsible for performance after a vehicle has been altered from its OEM state.



# APPLICATION CHART

## All Terrain and Mud Terrain

Tire Size	Wheel	A/T	M/T	Tire Size	Wheel	A/T	M/T	Tire Size	Wheel	A/T	M/T	Tire Size	Wheel	A/T	M/T
14/17R15	15"	12	14	39.5/13.5R15	16"	12	14	44/21R16	16.5"	14	20	42/14R17	18"	14	16
26/16.50R15		12	14	39.5/15R15		12	14	46/19.5R16		14	20	42/15R17		14	16
27/9.5R15		6	6	39.5/18R15		12	14	31/10.50R16.5		6	8	44/21R17		16	20
29/10.5R15		6	6	39/15R15		12	14	325/80R16.5		8	10	49/21R17		16	20
29/11.5R15		6	6	40/16R15		12	14	33/11.5R16.5		8	10	33/12.50R18		10	12
29/8.5R15		6	6	40/17R15		12	14	33/12.50R16.5		10	12	33/13.5R18		10	12
29/9.50R15		6	6	40/17R15		12	14	33/14.50R16.5		10	12	34/12.5R18		10	12
30/10.5R15		6	6	42/14R15		12	14	33/14R16.5		10	12	35/12.50R18		12	14
30/11.5R15		6	8	42/15R15		12	14	33/15.50R16.5		10	12	35/14.5R18		10	12
30/9.50R15		6	8	44/18.50R15		14	16	33/16.50R16.5		10	12	36/12.5R18		10	12
31/10.50R15		6	8	44/19.5R15		14	16	34/9.50R16.5		8	10	37/12.50R18		12	14
31/11.50R15		8	10	44/21R15		14	16	35/12.50R16.5		12	14	37/13.5R18		12	14
31/11R15		8	10	46/19.5R15		14	16	35/14.50R16.5		10	12	38.5/14.50R18		12	14
31/12.50R15		6	8	Q78		12	14	35/15.5R16.5		10	12	38/14.50R18		12	14
31/13.5R15		8	8	255/85R16		8	10	35/15R16.5		12	14	38/15.50R18		12	14
31/14.50R15		8	10	30/11.5R16		6	8	35/16R16.5		10	12	40/14.5R18		14	16
31/9.5R15		6	8	31/11.5R16		8	10	36/12.50R16.5		10	12	41/14.5R18		14	16
32/10.5/15		8	10	31/11R16		8	10	36/13.5R16.5		10	12	33/12.50R20		10	12
32/11.50R15		8	10	31/12.50R16		8	10	36/14.50R16.5		12	14	34/10.5R20		10	12
32/12.50R15		8	10	32/10R16		8	10	36/16.50R16.5		12	14	35/12.50R20		12	14
32/9.5R15		8	10	32/11.5R16		8	10	37/12.50R16.5		12	14	35/14.5R20		12	14
33/10.50R15		8	10	32/12.50R16		8	10	37/13R16.5		10	12	36/13.5R20		12	14
33/11.50R15		8	10	32/9.50R16		8	10	37/14R16.5		12	14	37/12.50R20		12	14
33/12.50R15		8	10	32/9R16		8	10	38.5/11R16.5		10	12	37/13.5R20		12	14
33/13.5R15		8	10	33/10.5R16		8	10	38.5/14.5R16.5		12	14	38.5/14.50R20		12	14
33/14.50R15		10	12	33/11.5R16		8	10	38.5/15R16.5		12	14	38/13.5R20		12	14
33/14R15		10	12	33/12.50R16		8	10	38.5/16R16.5		12	14	38/15.50R20		12	14
33/15.5R15		10	12	33/12R16		8	10	38/12.50R16.5		10	12	39.5/13.5R20		12	14
33/16.50R15		10	12	33/13.5R16		8	10	38/15.50R16.5		12	14	39.5/15R20		12	14
33/9.50R15		8	10	33/13R16		8	10	39.5/13.5R16.5		12	14	40/14.5R20		14	16
34/12.5R15		8	10	33/14.50R16		10	12	39.5/15R16.5		12	14	40/15.5R20		14	16
34/9.5R15		8	10	33/14R16		10	12	39.5/18R16.5		14	16	41/14.5R20		14	16
35/10.5R15	8	10	34/10.5R16	8	10	39.5/18R16.5	14	16	42/14R20	14	16				
35/12.50R15	8	10	34/12.50R16	10	12	40/15.50B16.5	14	16	42/15R20	14	16				
35/13.50R15	10	12	34/9R16	6	8	40/17B16.5	14	16	44/21R20	16	20				
35/14.5R15	10	12	35/10.50R16	8	10	42/14R16.5	14	16	49/21R20	16	20				
35/15.5R15	10	12	35/12.50R16	12	14	42/15R16.5	14	16	33/12.5R22	10	12				
35/15R15	10	12	35/14.50R16	12	14	44/18.50B16.5	16	20	35/12.50R22	12	14				
35/16R15	10	12	35/16R16	12	14	44/19.5R16.5	16	20	35/14.5R22	14	16				
36/12.50R15	10	12	36/12.50R16	12	14	44/21R16.5	14	20	37/12.5R22	14	16				
36/13.50R15	10	12	36/13.5R16	12	14	46/17R16.5	16	20	37/13.5R22	14	16				
36/14.40R15	12	14	36/13R16	12	14	46/19.5R16.6	16	20	38/13.5R22	14	16				
36/15.5R15	12	14	36/14.50R16	12	14	47/17R16.5	16	20	38/15.5R22	14	16				
36/16.50R15	12	14	36/14R16	12	14	47/19.5R16.5	16	20	40/14.5R22	14	16				
37/12.50R15	10	12	37/12.50R16	12	14	49/21R16.5	16	20	40/15.5R22	14	16				
37/13R15	10	12	37/13R16	12	14	33/12.50R17	10	12	41/14.5R22	14	16				
37/14.5R15	12	14	37/14R16	12	14	33/13.5R17	10	12	35/13.5R24	14	16				
37/14R15	12	14	38.5/11R16	10	12	34/10.5R17	12	14	37/13.5R24	14	16				
38.5/11R15	10	12	38.5/14.5R16	12	14	35/12.50R17	12	14	38/13.5R24	14	16				
38.5/14.5R15	12	14	38.5/15R16	12	14	35/14.5R17	12	14	38/14R24	14	16				
38.5/15.5R15	12	14	38/13R16	12	14	36/13.5R17	12	14	40/14.5R24	14	16				
38.5/15R15	12	14	38/14.5R16	12	14	37/12.50R17	12	14	40/15.5R24	14	16				
38.5/16.5R15	12	14	38/15.50R16	12	14	37/13.50R17	12	14	40/15.5R26	14	16				
38.5/16R15	12	14	39.5/13.5R16	12	14	37/13R17	12	14							
38/12.5R15	10	12	39.5/15R16	12	14	38.5/14.50R17	12	14							
38/15.5R15	12	14	40x14.5R16	14	16	38/15.50R17	12	14							
			41/14.5R16	14	16	39.5/13.5R17	12	14							
			42/14R16	14	16	39.5/15R17	12	14							
			42/15R16	14	16	40/13.50R17	14	16							
			44/19.5R16	14	16	41/14.5R17	14	16							



There are many variables that contribute to vibration in "mudder" tires. Before installing Counteract, please consider the following sources of vibration, including but not limited to: Proper drive line angle, tire pressure, presence of a lift kit, tire run-out, wheel run-out, extreme side wall flex, tread ripple, and/or a lug pattern that may cause acoustical vibration. These factors, and others, will play a role in the vibration of the vehicle and Counteract will not correct these conditions. We cannot guarantee the elimination of all vibration sources.

# APPLICATION CHART

# Motorcycle

FRONT Tire Width	Ounces Required
80mm-120mm	1
130mm-240mm	2
240mm - Up	3

REAR Tire Width	Ounces Required
130mm-240mm	2
250mm-360mm	3
195-205 Car Tire on Rear	3

Scooters	Ounces Required
10" Rim Diameter	1
12" & Up Rim Diameter	2

Dual Purpose, Dirt Bike w/Rim Lock	Ounces Required
Front 80mm-120mm	2
Rear 130mm-230mm	3

Tube Type Tire, Wire Spoke Rim	Ounces Required
80mm-120mm	2
130mm-240mm	2

## Harley-Dunlop Tire Size Conversion (MT90B16)

MT, MH, MJ etc = Tire Width, 90 = Tire Profile, B = Rim Diameter

MH = 80mm Width	MR = 120mm Width
MJ = 90mm Width	MT = 130mm Width
MM = 100mm Width	MU = 140mm Width
MN or MP = 110mm Width	MV = 150mm Width

### PLEASE NOTE EXCEPTIONS BELOW

- 1) Super Sport bikes can experience a vibration at high triple digit speeds because too much product was added. Please start with 1/2oz in the front tire, regular recommended amount in the rear.

(ZX1000, CBR1000RR, CBR600RR, ZX600R, R1, R6, RC8, etc)



EXAMPLE:

WIDTH / ASPECT RATIO x RIM DIAMETER

110/90x19



# APPLICATION CHART

# ATV/UTV Tires



**Note:** Due to the nature and uses of ATV/UTV tires, Counteract cannot guarantee a 100% balance. The use of this product in ATV/UTV applications is for a smoother, less fatiguing drive with an 80% decrease in vibration. Counteract is however the best means of providing balance to these applications.

## ATV/UTV Tire Sizes

Tire Height	Ounces Required
23" – 29"	4
30" – 33"	6
33" – 37"	8
37" – Up	10

### Disclaimer

Counteract does not accept any responsibility for use in Sand Paddle tires. These tires are not designed to be driven on road, and therefore cannot be balanced.



EXAMPLE:

HEIGHT x WIDTH x WHEEL DIAMETER

20 x 11 x 8

# APPLICATION CHART

## *Vintage and Classic Cars*

Rim Size	Application Size	Ounce Needed
12"	125R12	3
14"	P165/75R14	3
	P175/70R14	3
	P185/70R14	3
	P205/75R14	3
	P215/70R14	3
	F70/14	3
	G70/14	3
	695/14	4
	750/14	4
	800/14	4
15"	P205/75R15	3
	P215/75R15	3
	P225/75R15	4
	P235/75R15	4
	P215/70R15	4
	775/15	4
	E70/15	4
	F70/15	4
	F60/15	4
	G60/15	4
	670/15	4
	710/15	4
	760/15	4
	155 S R15	4
16"	600/16	4
	650/16	4
19"	450/19	4
	475/19	4
21"	4.40R21	4
	4.50R21	4
30"	30" x 3"	6
	30" x 3.5"	6



Modern reproduction wire wheels for Model T = 2oz

21" wire wheels (26/27 Model T) = 4oz

19" wheels (Model A, etc) = 4oz

17" wheels (30s cars) = 4oz

Vintage cars with wooden spokes and demountable rims = 6oz

Vintage cars with wooden spokes and felloes = Minimum of 5oz

Pre- WW1 Oldsmobile = Minimum 6oz

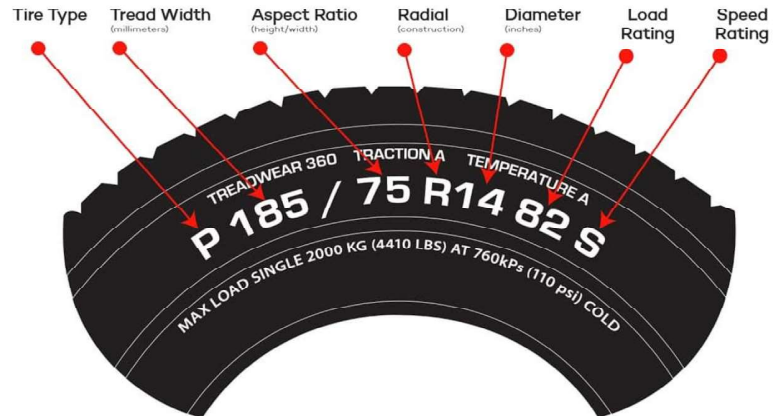
These weights are based on a guideline of 1oz of beads per 13lbs of wheel and tire weight.

Note: older wheels tend to be more out of balance.

# APPLICATION CHART

# Trailer Tires

Wheel Diameter	Tire Size	CBB Needed
8"	4.80/4.00 R8	3
	5.70 R8	3
	165/65 R8	3
	215/60 R8	3
9"	6.90/6.00 R9	3
10"	205/65 R10	3
12"	4.80 R12	3
	5.30 R12	3
	145/80 R12	3
13"	175/80 R13	4
	185/80 R13	4
14"	205/75 R14	4
	215/75 R14	4
14.5"	9.00 R14.5	8
15"	205/75 R15	4
	215/75 R15	4
	225/75 R15	4
	7.00 R15	6
16"	215/85 R16	4
	235/80 R16	4
	235/85 R16	4
	7.50 R16	6
16.5"	12.00 R16.5	8
17.5"	215/75 R17.5	8
	235/75 R17.5	8
	245/70 R17.5	8
19.5"	225/70 R19.5	10
	245/70 R19.5	10
	265/70 R19.5	12
22.5"	255/70 R22.5	12
	295/ 75 R22.5	12
	11 R22.5	12



Load Range	Ply Rating
A	2
B	4
C	6
D	8
E	10
F	12
G	14
H	16
J	18
L	20
M	22
N	24

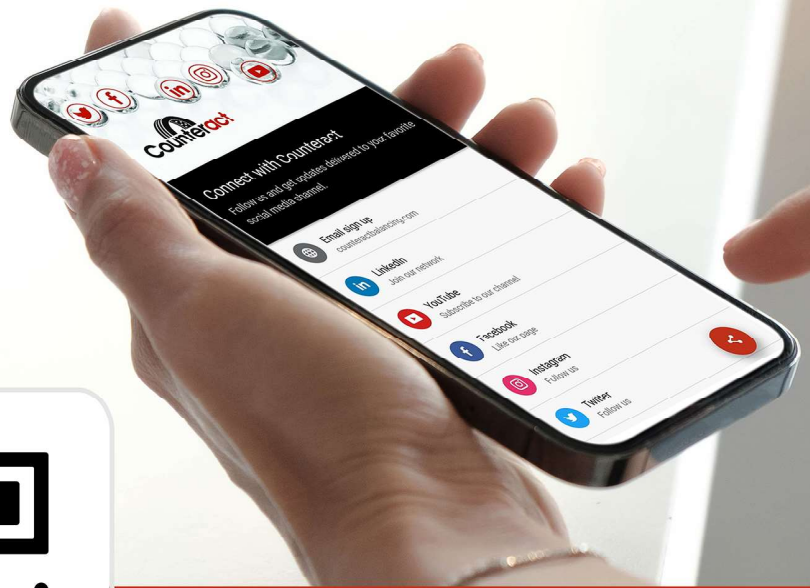
- 3 3oz
- 8 8oz
- 4 4oz
- 10 10oz
- 6 6oz
- 12 12oz

**How much Counteract for your tire?**

Visit [howmuchcounteract.com](http://howmuchcounteract.com) or download our app



QR Link



Connect with Us

Looking to connect with Counteract? Scan this QR code on your wireless device to sign up for new product alerts emails, and connect with us on Social Media.

Use **#teamcounteract** for a chance to win our monthly giveaway





**Counteract**<sup>TM</sup>  
*Balancing the wheels of transportation*



**NORTH AMERICA**

555 Southgate Drive  
Guelph, ON N1G 3W6  
Tel: 1-519-837-3331  
Toll Free: 1-800-572-8952  
[contact@counteractbalancing.com](mailto:contact@counteractbalancing.com)



**EUROPE & AFRICA**

R. Vieira 152, 3750-463  
Fermentelos, Portugal  
Tel.: (351) 234 941 294  
Fax: (351) 234 944 246  
[info@cbbe.eu](mailto:info@cbbe.eu)



**BRAZIL & SOUTH AMERICA**

João Liborio Junior, 123, Bairro: São Geraldo  
Sete Lagoas, MG, Brasil  
Telefone: 55 -31-3773-0654  
[counteract@uai.com.br](mailto:counteract@uai.com.br)